



Instructions for Daily Fun Tournament

Effective August 10th, 2020

25th Floor, Workington Tower,
78 Bonham Strand,
Sheung Wan, Hong Kong

tel 6629.5092

fax 3014.3824

email info@ScholasticChess.HK

web ScholasticChess.HK

Frequently Asked Questions

Question: Who is eligible to participate?

Answer: All players under 18 years old (as of January 1st, 2020) are eligible to play.

Question: What do I need to play in this tournament?

Answer: You will need a chesskid.com account and be a member of the ScholasticChess.HK Club. And then notify us you might be playing, and we will ensure your account is configured correctly.

If you don't have a chesskid.com account, we can create one for you at no cost. Please request by sending an email to Ben.Chui@ScholasticChess.HK. If you have an existing chesskid.com and would like to be added to the ScholasticChess.HK Club, you will also need to contact Ben.Chui@ScholasticChess.HK.

Question: How many rounds are there in the tournament?

Answer: There are 5 rounds per tournament. The first round starts at 9 am (HK time). You must "Join" the tournament 15 minutes before the tournament starts. Late entries are not permitted. Usually the 5th round ends by 12 noon.

Question: What is the entry fee?

Answer: This is a free tournament.

Question: What is the time control per game?

Answer: Each player gets 15 minutes plus 10 seconds per move per game.

Question: For how long will the daily tournaments run?

Answer: Chesskid.com is committed to run these tournaments at 9 am HK time.

Question: I see multiple tournaments on chesskid.com. Which one is recommended by Scholastic Chess?

Answer: We recommend the Fun Tournaments. Please note, the day reference is based on US time. As such, even though it is 9am in Hong Kong, it is only 6pm in San Francisco on the previous day.

Question: Can I play this tournament on my chesskid.com app on my phone?

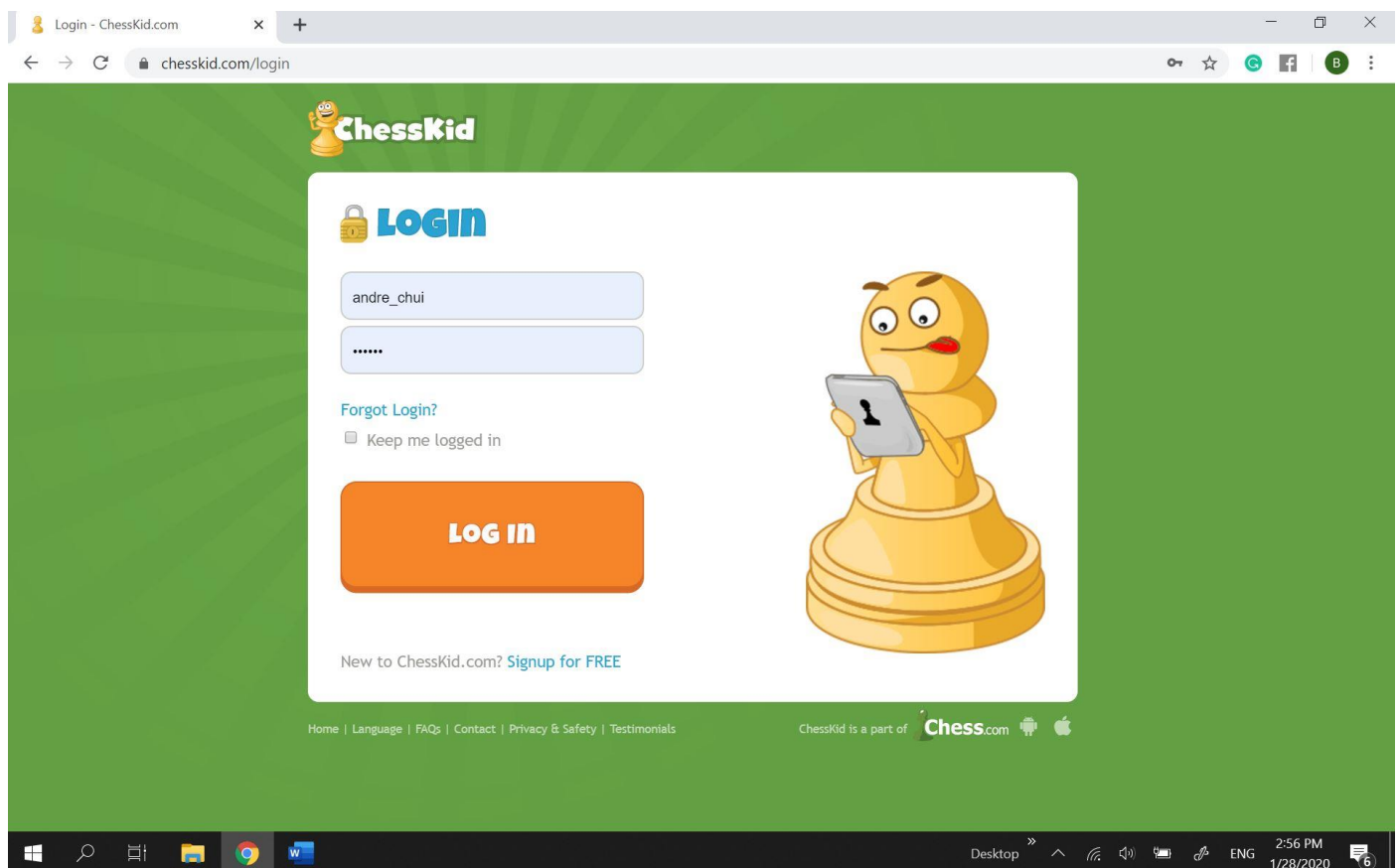
Answer: No. The online tournament requires you to use a desktop browser. Mobile devices are not compatible with this platform.

Question: I have 2 children, but only 1 PC available for them. And they both want to play. Is there a workaround?

Answer: We recommend they play on separate days.

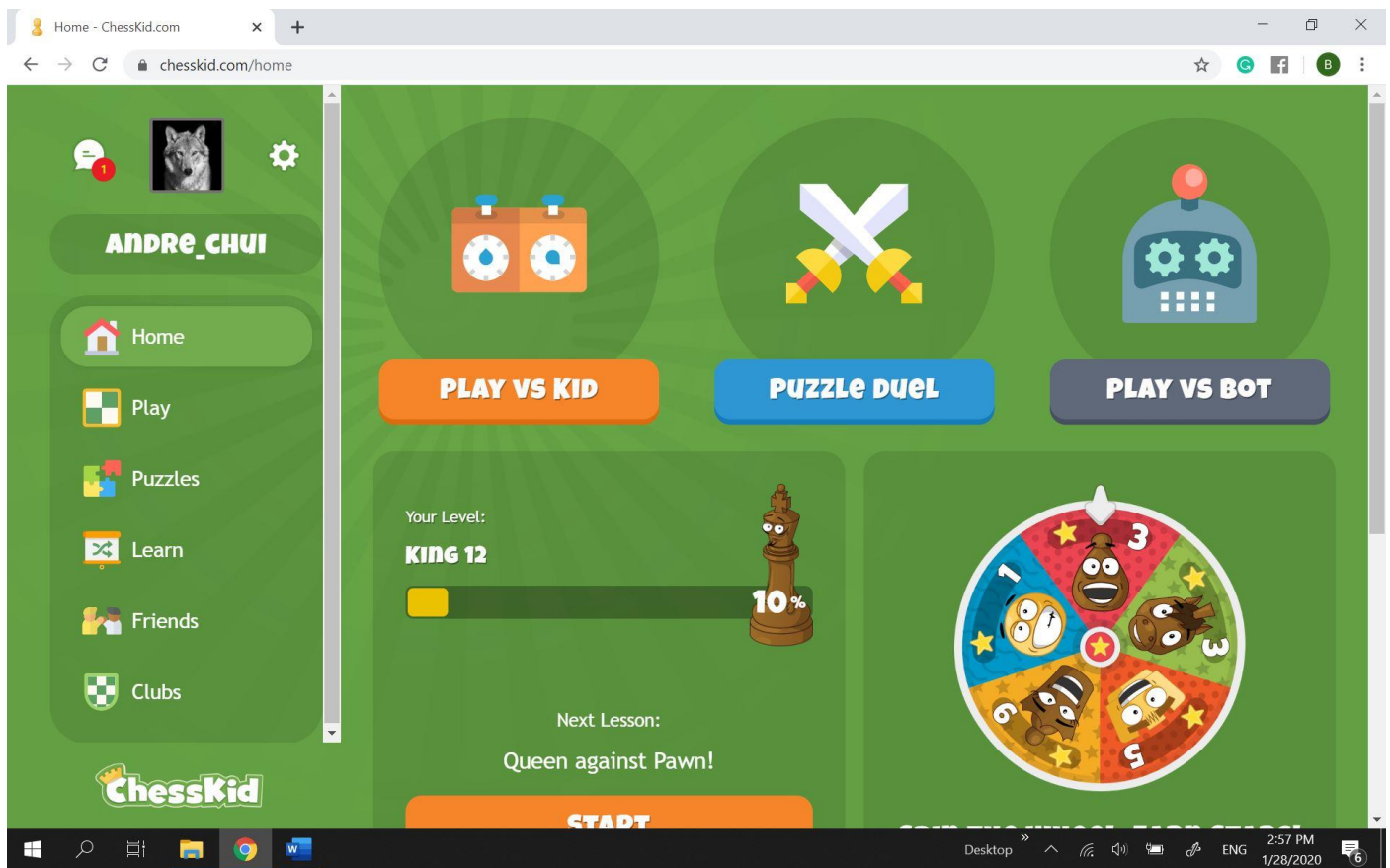
Question: How do I join the tournament?

Answer: Go to chesskid.com. You should see the following page:



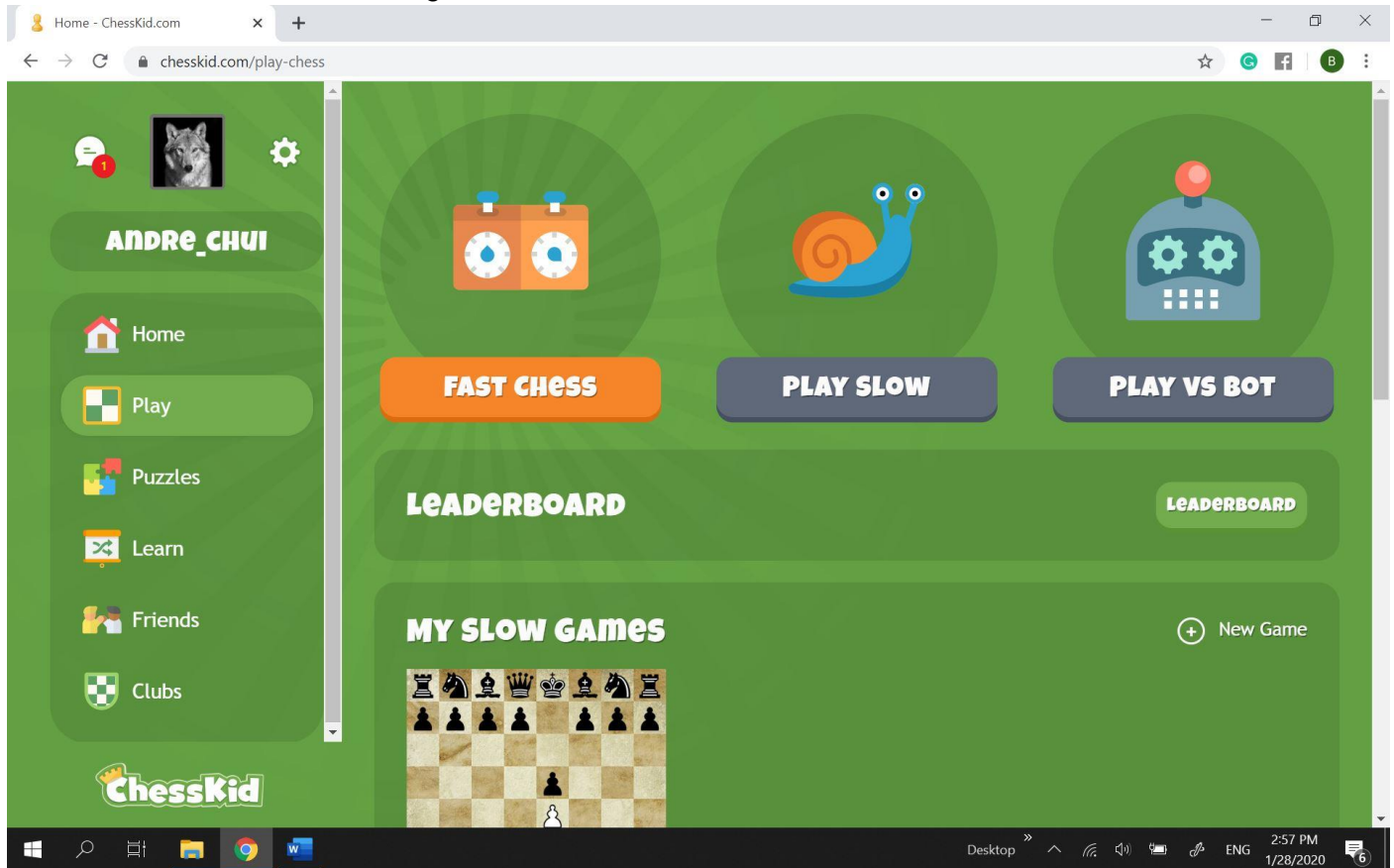
Enter your username and password then click Log In.

You should then see the following:



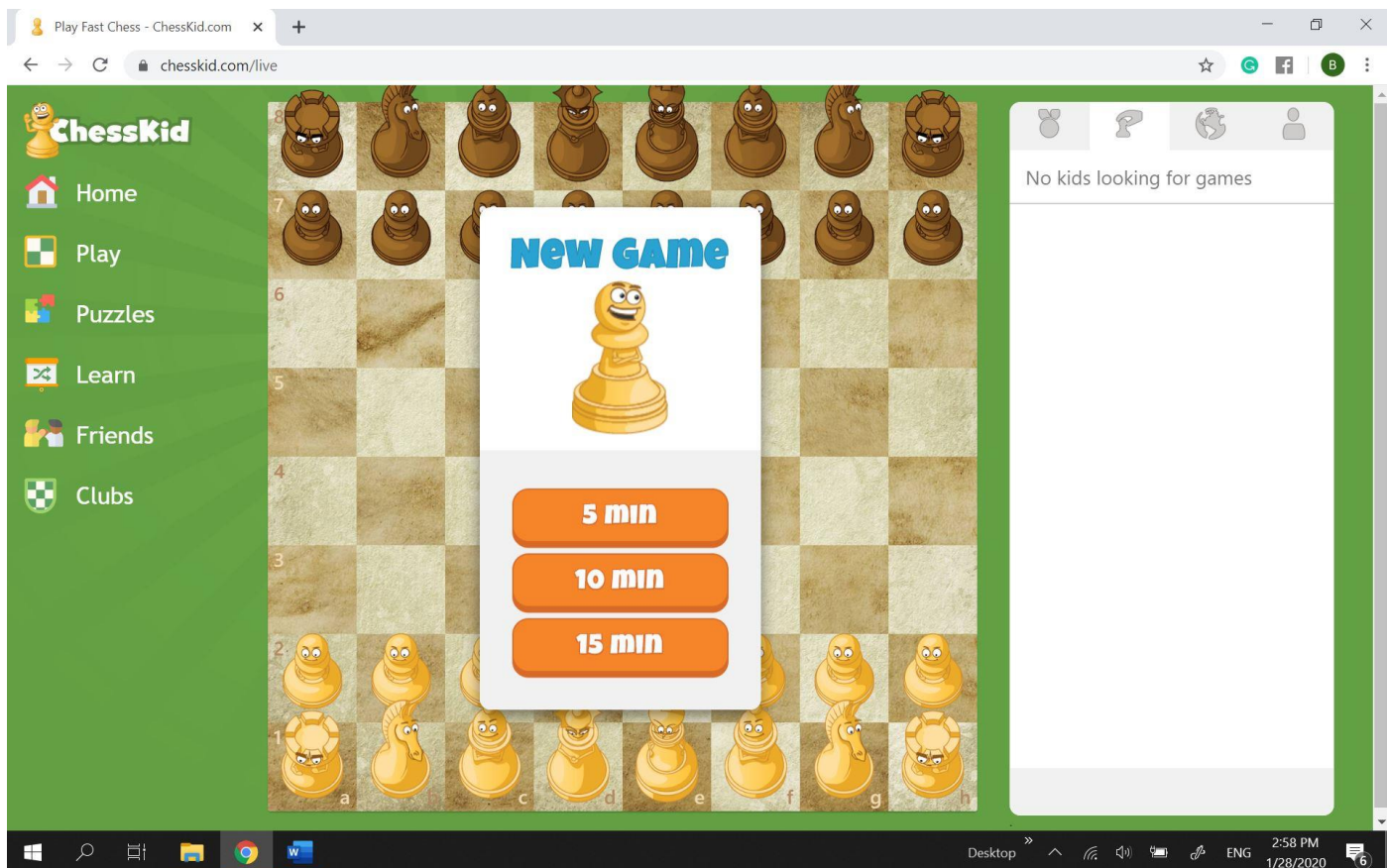
Then Click Play on the left panel.

You should then see the following:



Then click on "Fast Chess"

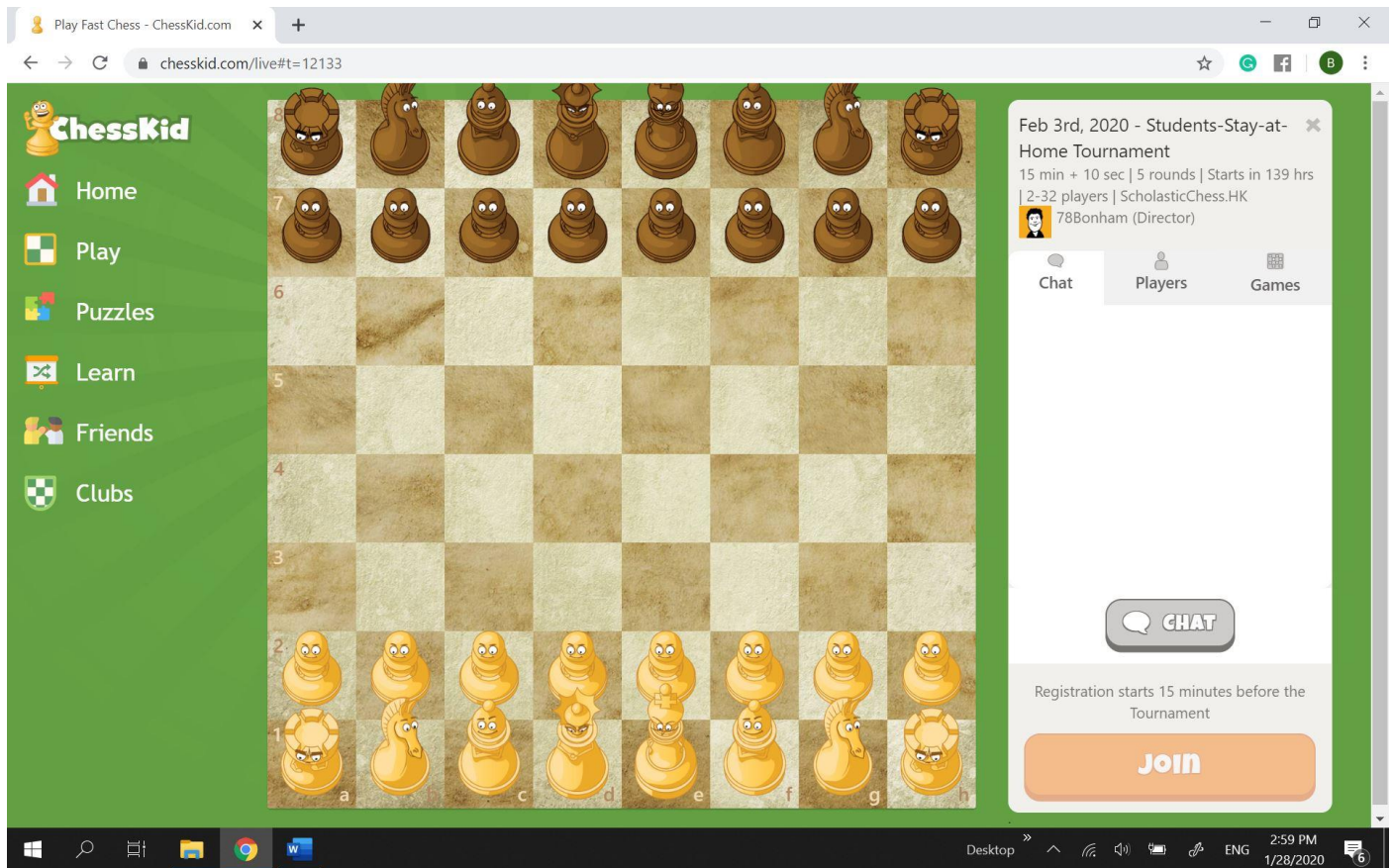
You will then see the following:



On the right panel, click on the “Medal” icon. Some people will say the icon looks like a peach. You will then see the Fun Tournaments:



The list of tournaments are all shown on the right. **Please note, since the days are based on US time, on Monday morning, you would see the description as Sunday Fun Tournament.**



You will need to be at this page by 8:45am, and click the orange “Join” button. The “Join” button is available between 8:45am and 9am. You **MUST** click Join during this 15 minutes window. The tournaments are already set to run on the server, and they will start at precisely 10am.

Can I join the tournament late and miss the first round?

Answer: Unfortunately no. Once the tournament starts, the server will prevent you from joining the tournament.

Can I watch the matches while waiting for the next round?

Answer: Yes! You can click on the Games button as shown in the picture below, then click on any of the binoculars, you can watch the games live.

[Home](#)

[Play](#)

[Puzzles](#)

[Learn](#)

[Friends](#)

[Clubs](#)

[Kids](#)

8

7

6

5

4

3

2

1

a

b

c

d

e

f

g

h

Feb 3rd, 2020 - Students-Stay-at-Home Tournament

15 min + 10 sec | Round 2 of 5 | 2-32 players | ScholasticChess.HK

788Bonham (Director)

Chat

Players

Games

CHAT

Send us Your Feedback!

Desktop

10:29 AM

2/3/2020
